

## General instructions

Please read these safety instructions before using your device and store them for possible future reference.

1. Do not attempt to remove any screws, or open the cover of the unit; there are no user serviceable parts inside, refer all servicing to qualified service personnel.
2. The power supply must be replaced by a new one in case of malfunction, because this power supply is not repairable.
3. The socket outlet shall be installed near the equipment and shall be easily accessible.
4. The product is not intended for use by persons (including children) with reduced physical, sensory or mental capacity. Persons who have not read the manual, unless they have received explanations by a person responsible for their safety and supervision, should not use this unit.
5. Children should be monitored to ensure that they do not play unattended with the product.
6. The cord should always be easily accessible.
7. The device should not be exposed to dripping or splashing of water or liquids and no objects filled with liquids, e.g. flower vases, should be placed on the product.
8. The normal ventilation of the product shall not be impeded for intended use.
9. It is recommended to leave a minimum distance of 10 cm around the unit to ensure sufficient ventilation.
10. Open flame sources, such as candles, should not be placed on top of the device.
11. The device is intended for use only in a temperate climate.
12. CAUTION:  
Danger of explosion if battery is incorrectly replaced or not replaced by the same type or equivalent.
13. The battery should not be exposed to excessive heat such as sunshine, fire or similar.
14. Different types of batteries, new and used batteries should not be mixed.
15. The battery must be installed according to the polarity.
16. If the battery is worn, it must be removed from the product.
17. The battery must be disposed of safely. Always use the collection bins provided for recycled items in order to protect the environment.

## WARNING

1. The **lightning flash** with the arrowhead symbol within an equilateral triangle alerts the user to the presence of un-insulated dangerous voltage within the product's enclosure that could cause electric shock.
2. The **exclamation mark** within an equilateral triangle alerts the user to the presence of important operating and maintenance instructions as well as warnings in the user's manual or on the product.



### CLASS 1 LASER PRODUCT LABEL

This label is attached to the place as illustrated to inform that this device contains a laser component.

CLASS 1	LASER PRODUCT
CLASSE 1	LASER PRODUITO
KLASS 1	LASER APPARAT
KLASSE 1	LASER PRODUKT
CLASSE 1	PRODUIT LASER



For European Union:  
This symbol on the product or on its packaging indicates that this product shall not be treated as household waste. By ensuring this product is disposed of correctly, you will help prevent potential negative consequences for the environment and human health, which could otherwise be caused by inappropriate waste handling of this product. It should be handed over to the applicable collection point for the recycling of electrical and electronic equipment. Please contact your local retailer. The recycling of materials will help to conserve natural resources.

# CRYSTALAUDIO

## HBT - Quick Guide -

## Thank you for purchasing the HBT mini HiFi system

This mini Hi-Fi system delivers **loud sound and deep bass**.

### TECHNICAL SPECIFICATIONS:

Power Output (RMS): **30W (2x 15W)**  
Max. Power Output: **40W**  
Woofer: **2x 4"**  
Freq. Response: **40Hz - 20KHz**  
Impedance: **4Ω**  
S/N: **80dB**  
FM Frequency Range: **87.5 - 108MHz**  
MP3/WMA Bit Rate: **32-320Kbps (MP3)**  
**40-320Kbps (WMA)**  
Rated Voltage: **AC 110-240V, 50/60Hz**  
Power Consumption: **20W**  
Dimensions (Main Unit): **150x230x195mm**  
Dimensions (Speakers): **130x229x155mm (each)**

### CONNECTIVITY FEATURES:

- Bluetooth® v5.0
- USB 2.0 port
- ✓ up to 32Gb, FAT16/32 file system
- AUX In
- HEADPHONES

### IN THE BOX:

- HBT HiFi system
- User Manual
- Remote Control
- Audio Cable (3.5mm-RCA)

### OTHER FEATURES:

- CD/CD-R/CD-RW/MP3
- FM Radio
- LED Display



## DECLARATION OF CONFORMITY

Radio equipment and telecommunications terminal equipment, Directive 2014/53/EU

We, Crystal Audio, hereby declare that the product, **HBT mini HiFi stereo soundsystem**, is in conformity with provisions of the Directive 2014/53/EU. The complete text of the Declaration of conformity can be found on the following webpage: [www.CrystalAudio.gr](http://www.CrystalAudio.gr)



**D & J DAMKALIDIS SA**  
44 Zefyrou str., P. Faliro, PC 17564  
Support: 210 9410888  
email: desk@damkalidis.gr



Designed in Europe by Crystal Audio -  
Assembled in China with the highest quality standards.  
The Bluetooth® word mark and logos are registered trademarks owned by  
Bluetooth SIG Inc. and any use of such marks by Crystal Audio is under license.  
Other trademarks and trade names are those of their respective owners.

[www.CrystalAudio.gr](http://www.CrystalAudio.gr)

# 1 Set up

## 1. Connect the speakers to the unit:

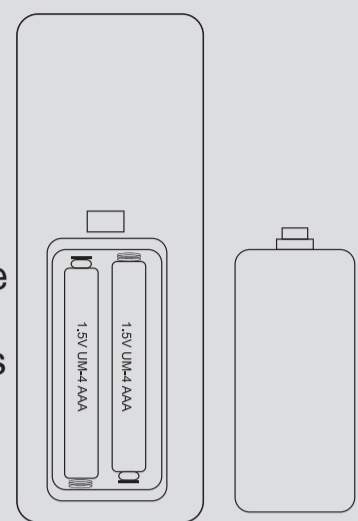
- Connect each speaker to the respective terminal.
- Speakers with 2-colour cable: black and red. Connect red cable into the red terminal (indicated as +), Connect black cable into the black terminal (indicated as -).

## 2. Connect the unit to the outlet:

- Connect the mains plug into the electrical outlet.

## 3. Battery Installation:

Slide out cover and place 2 AAA type batteries (not included) with polarities as shown below.



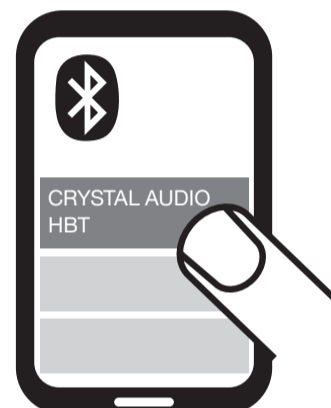
# 2 Wireless Connection

You can pair HBT with **any Bluetooth® enabled device** (phone, tablet etc).

1. Press **SOURCE** button on the Remote Control or Main Unit and select **BLUETOOTH** mode (bt indication on LED display).

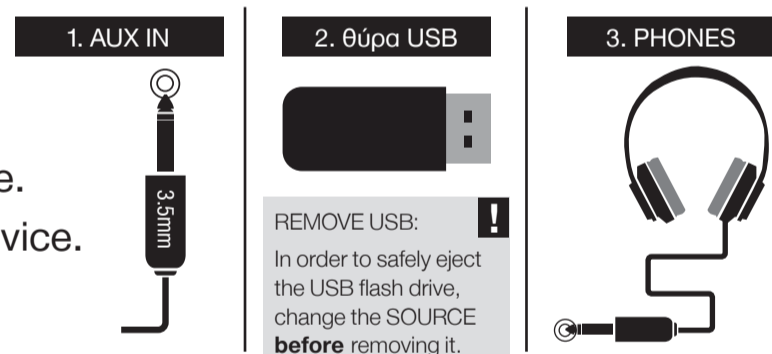
2. On your device, turn **BLUETOOTH** on and make it discoverable. Search for **CRYSTAL AUDIO HBT** and select it.

\* In case you are asked for a pass-code, please type in the numbers "1234".  
\* The device will automatically connect to the last paired Bluetooth device (smartphone, tablet etc.).



# 3 Wired Connection

1. **AUX IN:** Connect your external sound source via 3.5mm audio cable.
2. **USB:** Play songs directly from a USB flash drive. Won't charge a device.
3. **HEADPHONES:** Connect your headphones.



# 4 Mode Selection

Press **SOURCE** button on the Remote Control or Main Unit to switch between available modes.



# 5 Radio Tuning

## MANUALLY

RADIO mode:  
Long press **TUN- / TUN+** on the Remote Control or Main Unit to manually select a radio station.

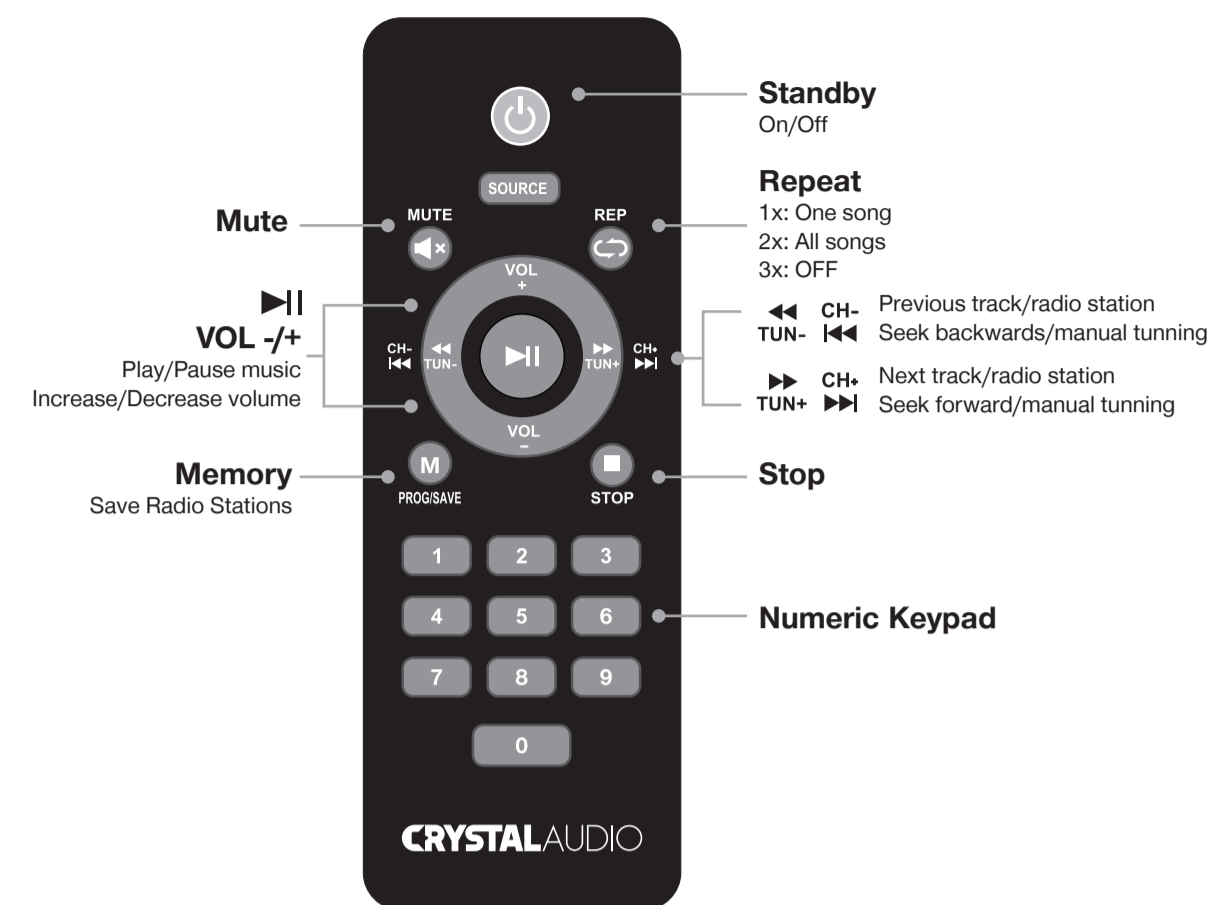
## SAVE

To save the station press **M(PROG/SAVE)** on the Remote Control and choose the desired position by pressing **CH- / CH+**. Press **M(PROG/SAVE)** once more to confirm and save.

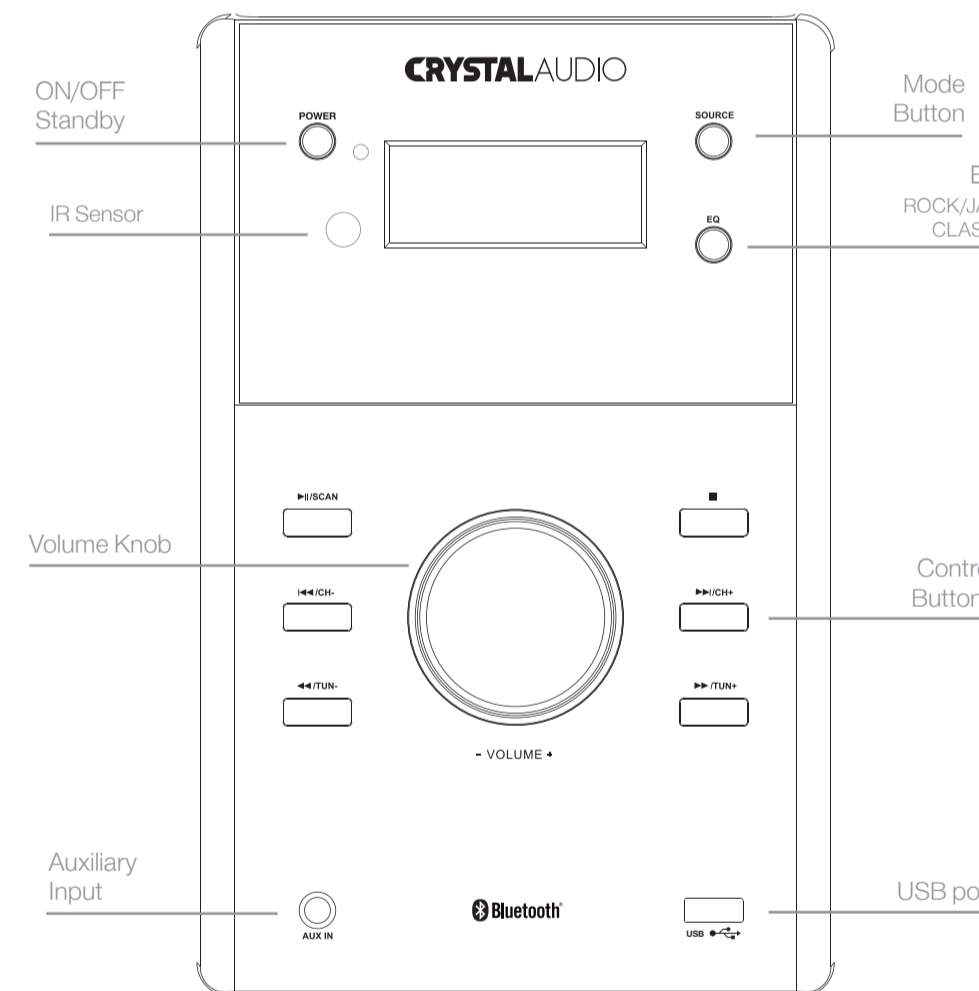
## AUTOMATICALLY

RADIO mode:  
Press **SCAN** button on Main Unit to automatically search and save available radio stations.

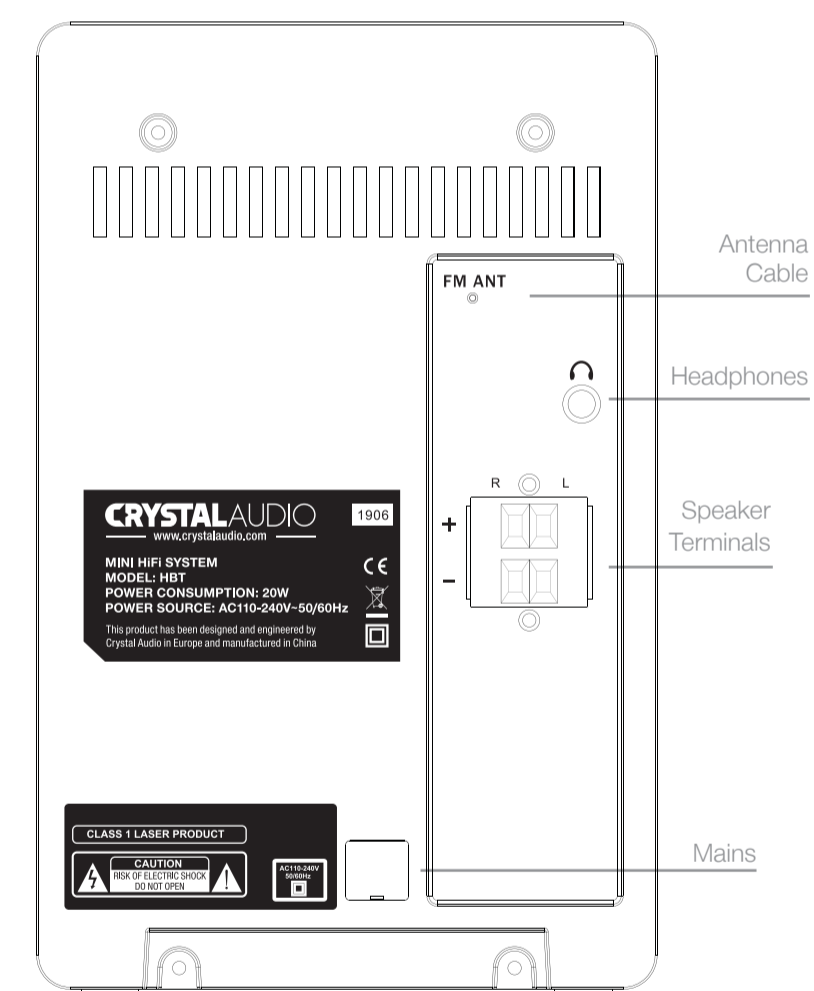
# 6 Controller



# 7 Front View



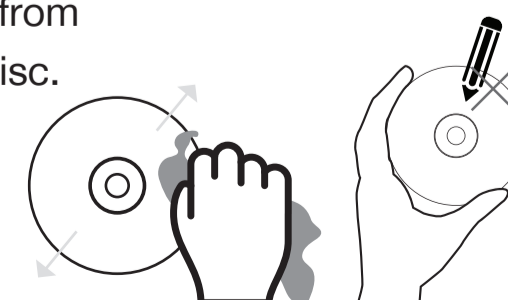
# Rear View



# 8 Care & Maintenance

## Compact discs:

1. Treat disc carefully holding it by its edges.
2. Clean with a soft, dry cloth. Wipe from the center to the outer edge of the disc. Do not wipe in circular direction.
3. Do not stick or write anything on either side of the disc.



## Unit:

1. To prevent shock hazard disconnect from the AC power source when cleaning the device.
2. Clean with a dry cloth. A damp cloth may be used on the front panel.

