



High-Speed Dye-Sub Digital Color Printer

CP-D90DW

Compact
Fast-Printing
Outstanding print quality
User-friendly
System Flexibility
Support Multiple Sizes



MITSUBISHI ELECTRIC
DIGITAL COLOR PRINTER

Changes for the Better

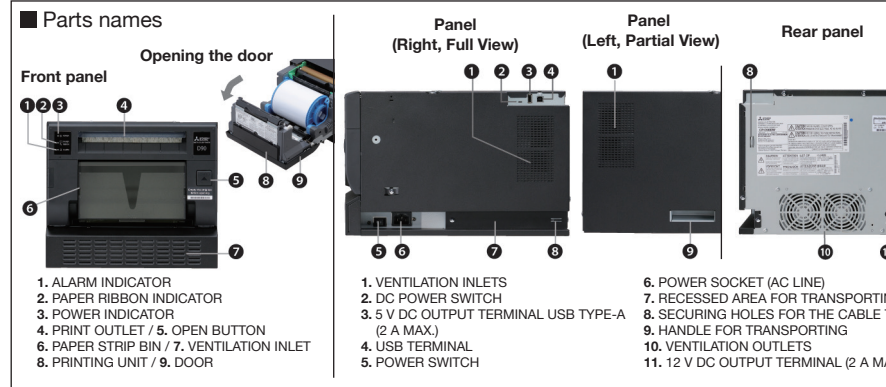


■ CP-D90DW Specifications

Model		CP-D90DW			
Print Technology	Dye sublimation thermal transfer full color. Three-color face progressive printing (yellow, magenta, cyan) plus surface lamination				
Gradations	256 Gradations (8 bit per color, approx. 16.7 million colors)				
Print Resolution	300 DPI				
Print Finish	Glossy/Matte				
Paper Capacity	Thick - Grade media (approx. 230µm)	102 x 152 mm (4x6")			400
		127 x 178 mm (5x7")			230
		152 x 203 mm (6x8")			200
	Light media (approx. 210µm)	152 x 229 mm (6x9")			180
		102 x 152 mm (4x6")			430
Print Speed*3	Print size	Fine Mode	Auto Mode		Ultra Fine Mode
			Light Image	Dark Image	
	102 x 152 mm (4x6")		approx. 7.8 sec		approx. 16.7 sec
	127 x 178 mm (5x7")		approx. 13.2 sec		approx. 28.8 sec
	152 x 203 mm (6x8")		approx. 14.6 sec		approx. 32.2 sec
152 x 229 mm (6x9")		approx. 16.2 sec		approx. 35.8 sec	
Interface	Hi-Speed USB Ver. 2.0				
Available Software Drivers	Windows®7/8/10(32bit/64bit)*1, MacOS®10.6~10.11*2				
Memory Size	128MB Volatile Memory for Temporary Retention. Data are erased after printing.				
Dimensions (WxDxH)	Approx. 275x365x237mm(10.8"x14.4"x9.3")				
Weight	Approx. 14kg (30.0lb)				
Power Supply	100-240V AC 50/60Hz				
Power Consumption	100-240V AC 50/60Hz 5.5A				
DC Output Terminals	12V / 2.0A max 5V / 2.0A max				
Accessories	Paper flange(1), Paper flange spacer(1), Ink cassette(1), Paper strip bin(1), Paper tray, AC power cord(120V), AC power cord(220-240V)(1), CD-ROM(1), Cable ties(2), Securing band/Screws/Washer(1set), Quick set up guide(1)				

*1: Windows® 7, 8 and 10 are registered trademarks of Microsoft Corporation in the United States and/or other countries.
 *2: Mac OS X print driver are available on the website. Mac OS are trademarks of Apple Computer, Inc. in the United States and/or other countries.
 *3: Does not include data transfer, printer initialization and paper feed times.
 *4: You cannot use both terminal simultaneously
 *5: *5: DC Power Output Terminals cannot be used simultaneously, only one can be active at any given moment.

■ Parts names



Front panel
Opening the door

- ALARM INDICATOR
- PAPER RIBBON INDICATOR
- POWER INDICATOR
- PRINT OUTLET / 5. OPEN BUTTON
- PAPER STRIP BIN / 7. VENTILATION INLET
- PRINTING UNIT / 9. DOOR

Panel (Right, Full View)

- VENTILATION INLETS
- DC POWER SWITCH
- 5 V DC OUTPUT TERMINAL USB TYPE-A (2 A MAX.)
- USB TERMINAL
- POWER SWITCH

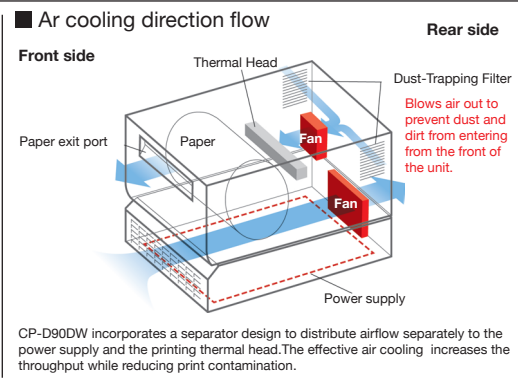
Panel (Left, Partial View)

- POWER SOCKET (AC LINE)
- RECESSED AREA FOR TRANSPORTING
- SECURING HOLES FOR THE CABLE TIE
- HANDLE FOR TRANSPORTING
- VENTILATION OUTLETS
- 12 V DC OUTPUT TERMINAL (2 A MAX.)

Rear panel

6. POWER SOCKET (AC LINE)
7. RECESSED AREA FOR TRANSPORTING
8. SECURING HOLES FOR THE CABLE TIE
9. HANDLE FOR TRANSPORTING
10. VENTILATION OUTLETS
11. 12 V DC OUTPUT TERMINAL (2 A MAX.)

■ Ar cooling direction flow



Front side

Thermal Head
Paper
Paper exit port
Fan
Dust-Trapping Filter
Blows air out to prevent dust and dirt from entering from the front of the unit.
Fan
Power supply

CP-D90DW incorporates a separator design to distribute airflow separately to the power supply and the printing thermal head. The effective air cooling increases the throughput while reducing print contamination.

■ Consumables (Media sold separately)

Model	Size	Prints per roll	Roll per box	Thickness
CK-D746 / CK-D715	102 x 152mm (4x6")	400 prints	2	approx. 230µm
CK-D757 / CK-D718	127 x 178mm (5x7")	230 prints	2	
CK-D768 / CK-D720	152 x 203mm (6x8")	200 prints	2	
CK-D769 / CK-D723	152 x 229mm (6x9")	180 prints	2	approx. 210µm
CK-D868 / CK-D820	152 x 203mm (6x8")	215 prints	2	

*Maximum size indicated. However, printer will still support printing multiple, smaller print sizes from this media model.



for a greener tomorrow

Еco Changes является коммуникационной программой Группы компаний Mitsubishi Electric, отражающей приверженность компании идеям охраны окружающей среды. Развивая различные направления бизнеса, компания вносит свой вклад в создание экологически рационального общества.

MITSUBISHI ELECTRIC CORPORATION
HEAD OFFICE: TOKYO BLDG., 2-7-3 MARUNOUCHI, CHIYODA-KU, TOKYO 100-8310, JAPAN

www.mitsubishielectric-printing.com

New publication, effective February 2016
Specifications are subject to change without notice.



High-Speed Dye-Sub Digital Color Printer
CP-D90DW
Prints Fast with Exceptional Quality.
The New Mitsubishi Compact Dye-Sub Printer
to Expand Your Photo Printing Business.

Compact
Fast-Printing
Outstanding print quality
User-friendly
System Flexibility
Support Multiple Sizes

Outstanding product reliability and durability backed by Mitsubishi Electric's over 30 years of history in development and manufacture of dye-sub printers with over 100 thousand units installed worldwide.

for a greener tomorrow



High-Speed Dye-Sub Digital Color Printer CP-D90DW

Compact

The new, compact design of the CP-D90DW strategically minimizes protruding and hanging cables for a neat, space-saving installation.



H:237mm
(9.3")



W:275mm
(10.8")

D:365mm
(14.4")

← 446mm →



CP-D70DW

18%
smaller footprint



CP-D90DW

← 365mm →

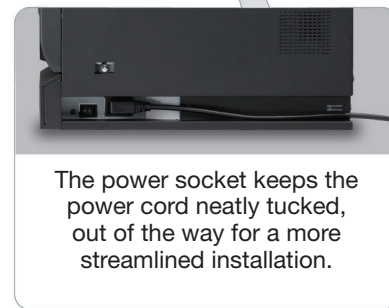
37x28cm

excluding optional paper tray

One of the world's smallest footprint

Providing overall space and cost savings in every system installation.

*Among 400 prints class, an in-company investigation

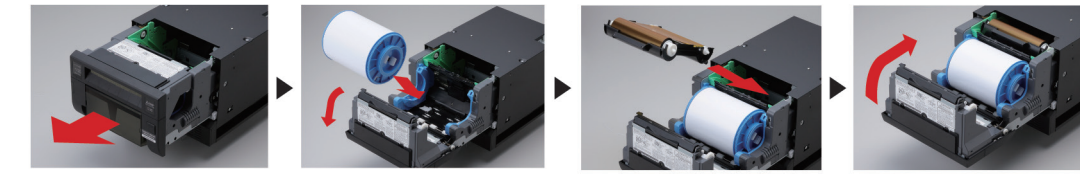


The power socket keeps the power cord neatly tucked, out of the way for a more streamlined installation.

User-friendly

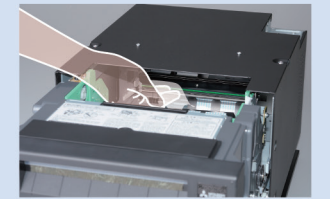
CP-D90DW is designed for ease of use and quick maintenance with front-loading design for media.

Easy Media Loading



1. Open front door
2. Pull out front door and load paper
3. Slide ink ribbon
4. Close front door to complete the auto paper loading

Maintenance

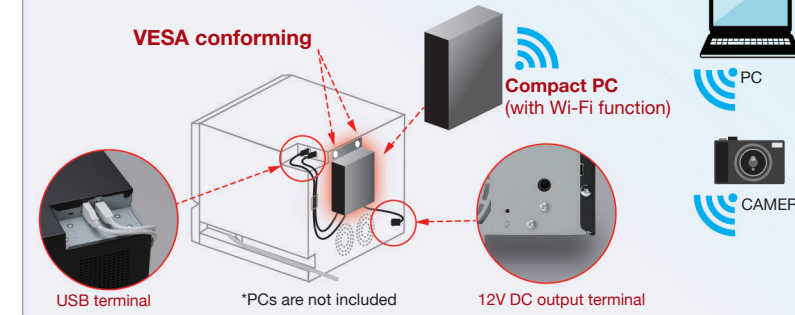


Easy access to the thermal head for cleaning.

- Ein Energiesparmodus hilft, die Betriebskosten durch minimalen Stromverbrauch im Bereitschaftsbetrieb zu senken.
- Langlebiger Thermokopf mit einer besonderen Schutzschicht bietet Langlebigkeit und Haltbarkeit und reduziert die Betriebsgesamtkosten.
- Durch einen kurzen Druck auf die Schnappriegel rasten die Flanken rasten einfach in die Papierrolle ein.
- Der Hauptschalter ist leicht vom vorderen Bereich des Gerätes erreichbar.

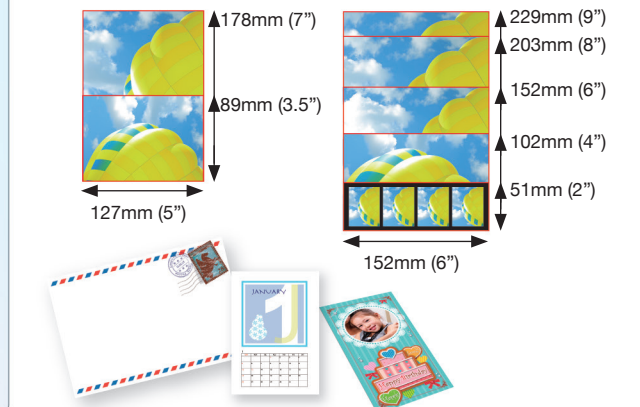
System Flexibility

With available DC output terminals of 5V 2A and 12V 2A, small, low-powered computer like Stick PC, or mobile devices can easily be powered through the printer, supporting a broader range of possible applications such as wireless printing, helping build a cost-efficient printing station more easily.



Support Multiple Sizes

Supports various print sizes using a Software Development Kit for customize applications. More than 51mm(2") toward paper feeding direction, 1 dot step.



Supports 2 Types of Paper

CP-D90DW is compatible with all media used by the D70 series printers, as well as a more versatile and cost-efficient paper with higher print counts per roll.

Efficient Rewind Function

The rewind function offers cost savings by maximizing media usage.

Outstanding print quality with High speed

Mitsubishi Electric's CP-D90DW comes with an Image Analyzing Engine built-in to enable faster printing without compromise on image quality. Each image received is built and analyzed within the printer processor with its print density and details analyzed and printed accordingly, yielding the best result with every photo printed.

Improved "First print" speed

The built-in image processor of the CP-D90DW reduces the processing workload of external computers, cutting down the overall initialization time of the first print output of every job it receives.

Improved Throughput

The improved thermal head cooling design of the CP-D90DW allows it to print more than 450 102 x 152mm(4 x 6") prints per hour*.

*average speed of a single print from 102x152mm(4x6") size 2-up prints in its best condition, excluding media reloading time.

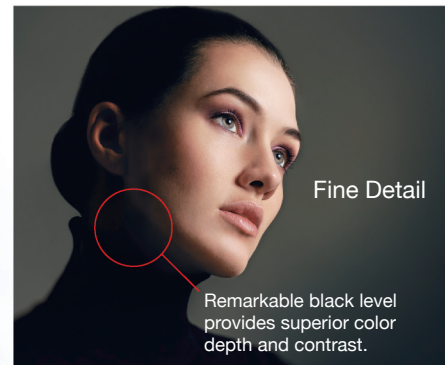
Deeper Black

Conventional Models



CP-D90DW

Prints photos with remarkable clarity, vivid colors, and higher quality finish.



Fine Detail

Remarkable black level provides superior color depth and contrast.



Clearer prints with no blurring even in fine lines and details. No deterioration or compromise of original image details.

New humidity sensor

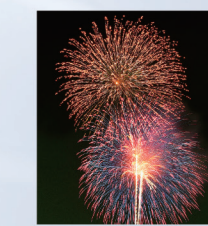
The new, built-in humidity sensor restrains effect of humidity change and brings stable high quality.

These images are for illustration purposes only

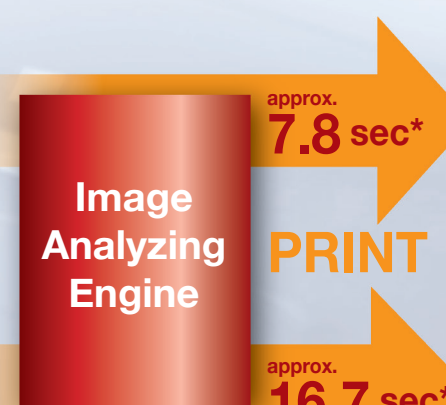
Automatic Optimization of Printing Speed



Light or medium image



Dark or Densely Colored Image



approx. 7.8 sec*

approx. 16.7 sec*



High Speed Mode (Super Fine)

Printer's system engine analyzes incoming image data and optimizes printing speed automatically to achieve higher quality printed image in High Speed Mode.

Despite printing in higher speed, deep black portions were sufficiently achieved in darker areas of the same photo.

Printing speed was adjusted to accommodate the requirement of printing a darker image photograph in higher density, producing a higher quality output.

*average speed of a single print from 102x152mm(4x6") size 2-up prints in high-speed mode, excluding data transfer time