



8" duplex printer  
**CP-W5000DW**

- High-speed printing
- Large paper capacity
- Multiple print sizes
- User-friendly
- High-quality print

■ CP-W5000DW Specifications

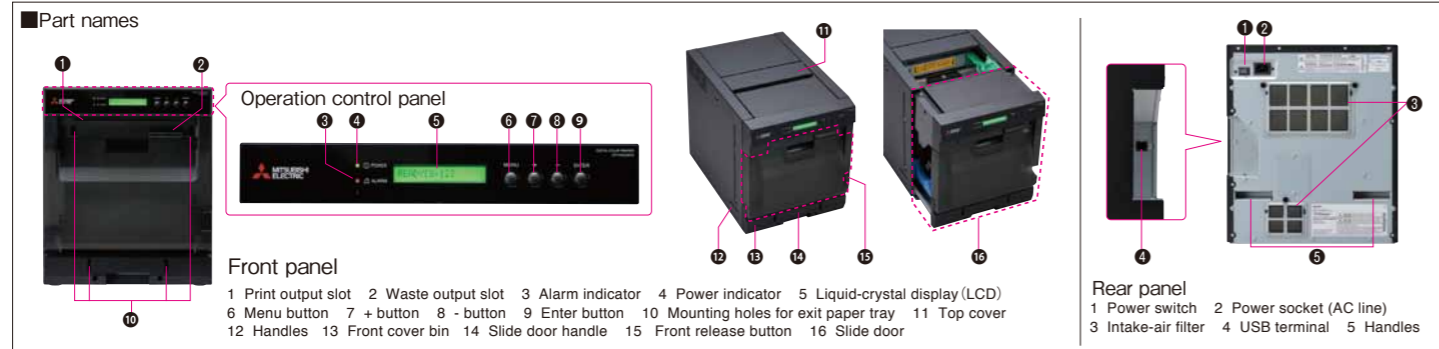
Model		CP-W5000DW
Printer type		Double-sided/Single-sided printing
Printing method		Dye sublimation thermal transfer line print 3-color faces progressive printing (yellow, magenta, and cyan) and surface lamination
Gradations		256 (8-bit) for each color
Print finish		Glossy/Matte
Print resolution		300 x 300DPI
Paper capacity		Maximum 250 prints (203 x 305mm / 8 x 12")
Printing time*1*2 (double-sided)	203 x 305mm (8 x 12")	Approx. 83.9sec
	203 x 254mm (8 x 10")	Approx. 75.4sec
	203 x 203mm (8 x 8")	Approx. 69.4sec
	178 x 127mm (7 x 5")	Approx. 39.4sec
	152 x 102mm (6 x 4")	Approx. 30.3sec
Interface		Hi-speed USB(Ver.2.0)
Driver software		Windows® 7/8 (32-bit and 64-bit)*3
Buffer size		128MB
Dimensions (W x D x H)	(excluding paper tray)	Approx. 342 x 509 x 402mm (13.5 x 20.0 x 15.8")
	(including paper tray)	Approx. 342 x 795 x 402mm (13.5 x 31.3 x 15.8")
Weight (excluding accessories)		Approx. 29kg (64lbs)
Power supply		100-240VAC 50/60Hz
Power consumption		5.5 - 2.4A
Accessories		Power cords (for 120V and 230V), ink cassette (1), paper flanges (1 set), exit paper tray (1), bracket for exit paper tray (1), exit waste bin (1), CD-ROM (1), quick setup guide (1)

\*1 As of September 2014, excluding data transfer time. Maximum speed continuous printing.

\*2 In-house investigation

\*3 Microsoft and Windows® are the trademarks of Microsoft Corporation in the U.S.A. and other countries.

■ Part names



■ Consumable parts



Contents	
CK5000	1 paper roll/box (Maximum 250 sheets : 8x12" size)
PK5812	2 ink ribbons/box (250 duplex prints, 500 simplex prints : 8x12" size)



for a greener tomorrow

Eco Changes is the Mitsubishi Electric Group's environmental statement, and expresses the Group's stance on environmental management. Through a wide range of businesses, we are helping contribute to the realization of a sustainable society.

**MITSUBISHI ELECTRIC CORPORATION**

HEAD OFFICE: TOKYO BLDG., 2-7-3 MARUNOUCHI, CHIYODA-KU, TOKYO 100-8310, JAPAN

**MITSUBISHI ELECTRIC**  
DIGITAL COLOR PRINTER

Changes for the Better



ISO9001  
JQA-0521

8" duplex printer

**CP-W5000DW**

Mitsubishi Electric's rich technological strengths and hardware expertise bring a new, fully featured compact double-sided printer

- High-speed printing
- Large paper capacity
- Multiple print sizes
- User-friendly
- High-quality print



for a greener tomorrow

8" duplex printer

# CP-W5000DW

## Abundant features yet compact. A printing workhorse on a desktop.

While being compact, the CP-W5000DW offers speed, large paper capacity and multiple print sizes. It comes with Mitsubishi Electric's one-of-a-kind paper path switching method, never before seen in a small-size duplex machine. The CP-W5000DW is budget-friendly too.



Double-sided print



All measurements are approximate



**0.18m<sup>2</sup>**  
excluding paper tray

With a footprint of only 0.18m<sup>2</sup> (1.88ft<sup>2</sup>) the duplex printer is compact. The paper tray is designed to placement flexibility; enabling the user to maximize allow workspace/store layout.

## High-speed printing **Approx. 75.4sec**

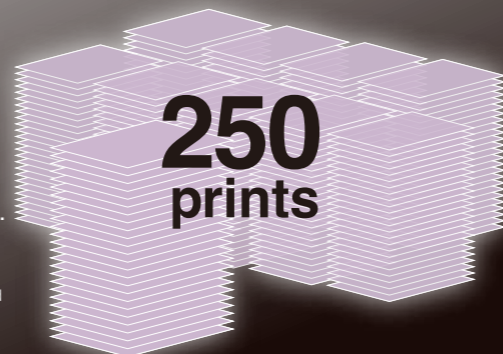
8x10" dual-side printing in 75.4 seconds.\*  
8X12" dual-side printing in 83.9 seconds.\*

Large quantity processing at high speed reduces the amount of operator intervention. \*In-house investigation

## Large paper capacity

Though designed for desktop use and compact, the CP-W5000DW can print up to 250 (dual-sided)\* 8x12 sheets from a single roll of paper. This saves operating time and effort, and improves productivity.

\*2 ink ribbons are required

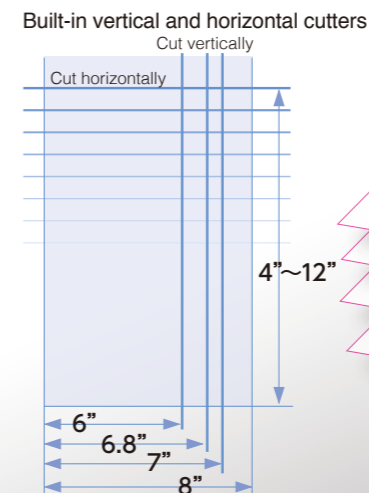


## Multiple print sizes

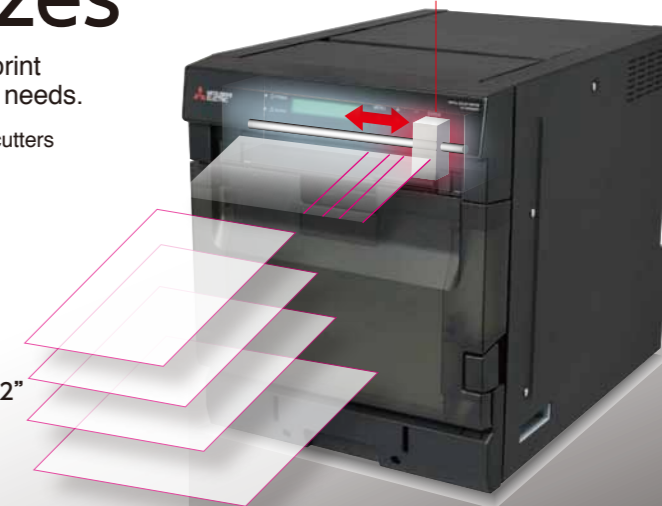
The CP-W5000DW provides dual-sided printing of multiple print sizes to cover a diverse range of on-demand photo finishing needs.

	Paper size (inch / mm)	
①	8 × 12"	203 × 305
②	8 × 11.7"	203 × 297
③	8 × 11"	203 × 279
④	8 × 10"	203 × 254
⑤	8 × 8"	203 × 203
⑥	8 × 6"	203 × 152 *
⑦	8 × 4"	203 × 102 **
⑧	7 × 5"	178 × 127 *
⑨	6.8 × 9.6"	173 × 244
⑩	6.8 × 4.8"	173 × 122 *
⑪	6 × 12"	152 × 305
⑫	6 × 6"	152 × 152 *
⑬	6 × 4"	152 × 102 **

\* Maximum 2-UP  
\*\* Maximum 3-UP



Move the built-in longitudinal cutter to four positions.



The vertical and horizontal cutters can be set to 10 different positions, producing 13 different print sizes. This provides the flexibility of multiple print-size options from just one printer, thereby offering maximum return with minimum investment.

## User-friendly

### Easy operation

User-friendly front panel display and operation buttons allow you to easily check the status of the printer, remaining media, user notifications, etc.



Example of display

### Easy paper loading

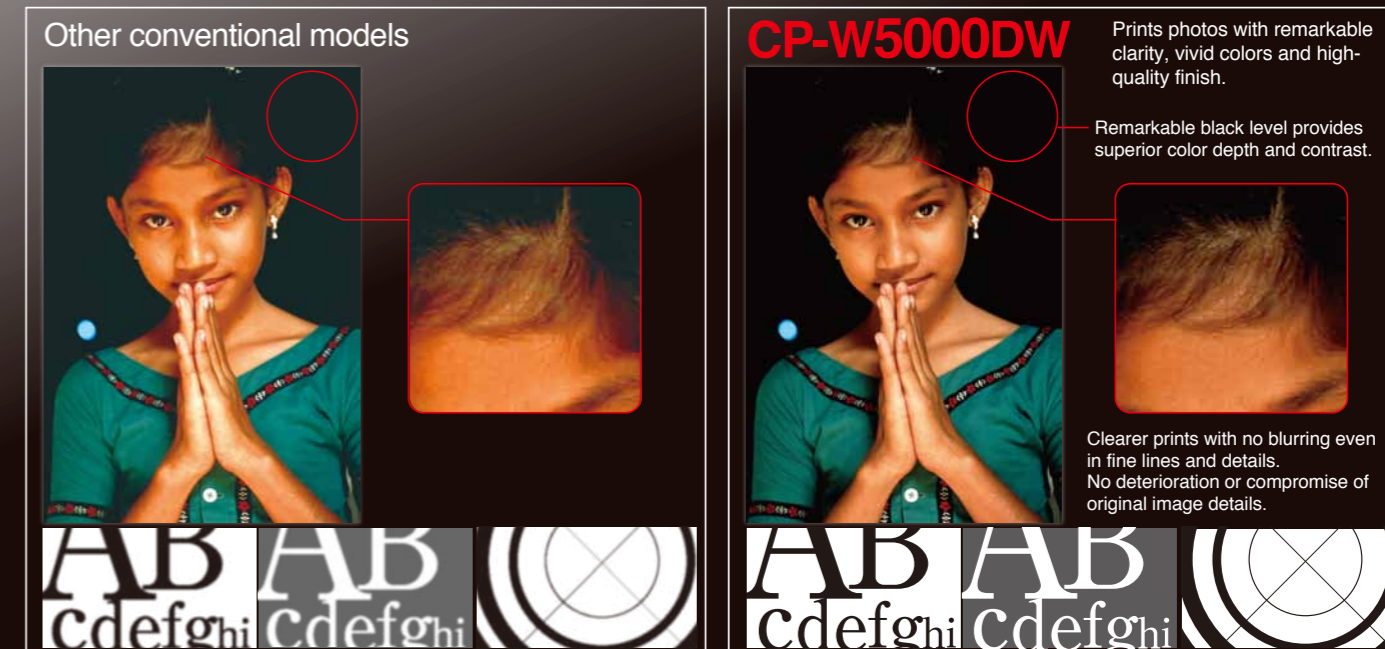
The paper can be easily changed without any complex operations. A blue lamp lights up next to the paper roll when paper is properly loaded/installed and ready for use.



Blue lamp lighting

## High-quality print

Much deeper black than before. The deep black color enables fine prints with depth.



Other conventional models

**CP-W5000DW**

Prints photos with remarkable clarity, vivid colors and high-quality finish.

Remarkable black level provides superior color depth and contrast.

Clearer prints with no blurring even in fine lines and details. No deterioration or compromise of original image details.